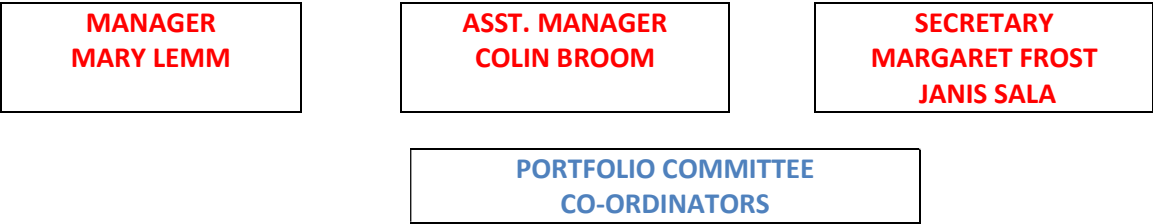


# CROQUET PORTFOLIO MANAGEMENT STRUCTURE 2017/2018



PENNANTS	GREENS	SOCIAL/FUND RAISING	COACHING	MARKETING	MEMBERSHIP	PLAY Wed/Fri/Sat.	RECRUITMENT	OFFICE PRESENTATION
<b>RUTH DUNN</b> (Team Captain) <b>COLIN BROOM</b>	<b>COLIN BROOM</b> (only member approved to Liaise with Greenkeeper)	<b>COLIN BROOM</b> <b>MARGARET FROST</b> <b>PATRICIA CLAYTON</b> <b>HELEN JANSSEN</b>	<b>RUTH DUNN</b>  Dev./Run Program	<b>ROGER ZEUNER</b> Website	<b>JENNIFER PORTWAY</b> Member Liaison Officer	<b>COLIN BROOM</b> <b>MARGARET LENNOX</b> + players present	<b>JAYNE DOWDELL</b> <b>COLIN BROOM</b>	<b>MARGARET LENNOX</b> <b>JANICE GRAVES</b>
. Selection . Umpires - SACA - Website Co-Ord. . Club Notice Boards		. Gala Days . Raffles . Social Functions . Bunnings``		<b>SHARON LANGSTON</b> Face Book  Grant Sub. Comm. M. Frost	<b>MARGARET LENNOX</b> <b>JANICE GRAVES</b> . Follow up after initial play . Provide Information Kit . Orientation to Club facility  <b>PATRICIA CLAYTON</b> <b>HELEN JANSSEN</b> . Registration  <b>COLIN BROOM</b> keys/badges	Set up and organize draw  <b>CHILD PROTECTION OFFICER</b> . DAVID RAYNER	. Planning . Contact person . Recruit Support Members . Attendance Record . Refreshments . Co-ordination	

MARY LEMM, CROQUET PORTFOLIO MANAGER 16/7/17